

10" Woodworking Bandsaw

Model: 10-300

RIKON

POWER TOOLS



Record the serial number and date of purchase
in your manual for future reference.

Serial number: _____

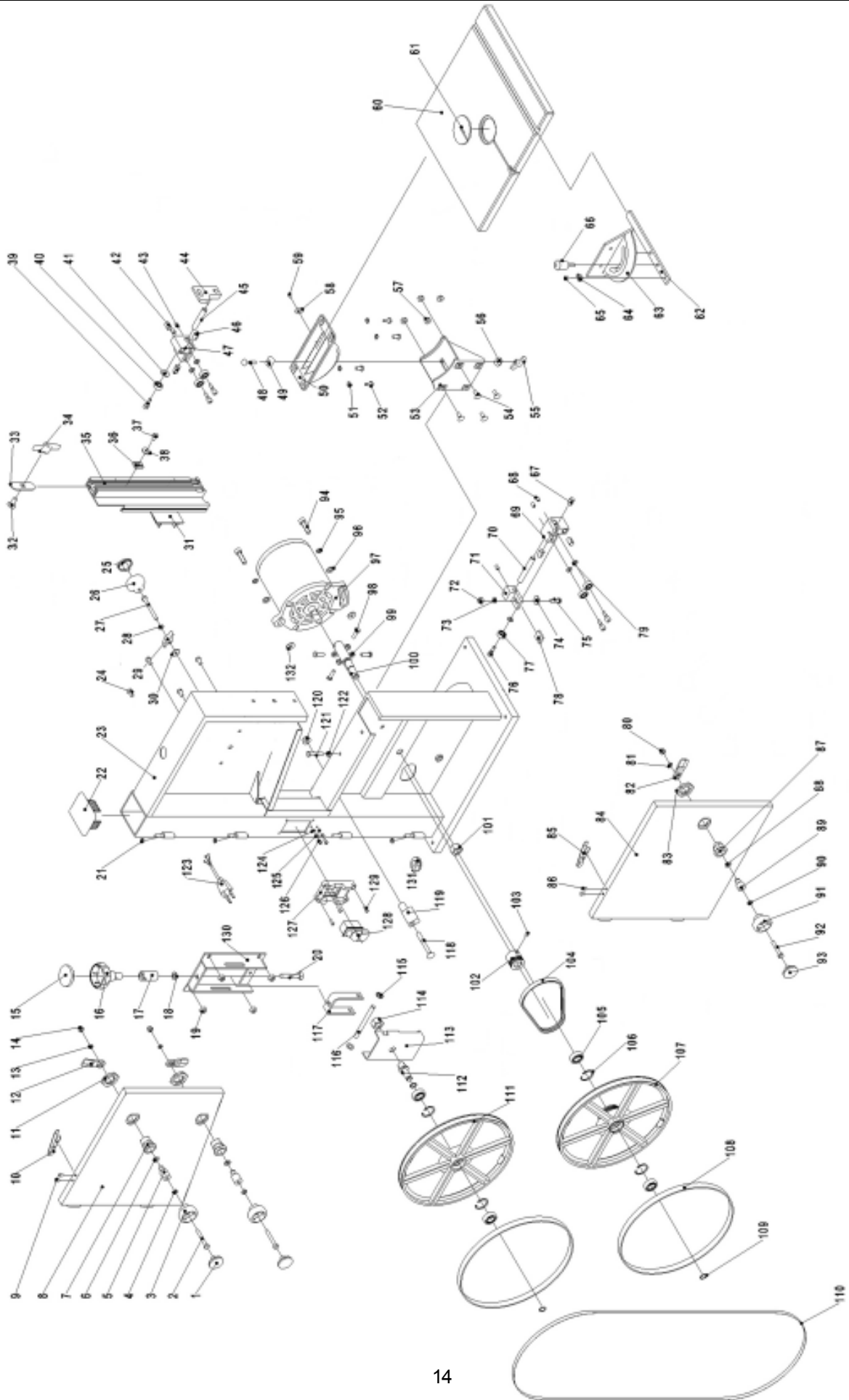
Date of purchase: _____

For more information:
www.rikontools.com or info@rikontools.com
For Parts or Questions:
techsupport@rikontools.com or 877-884-5167

Parts List

Key No.	Part#	Description	Key No.	Part#	Description
1	JL20061101-081S	Knurled Knob Cap	67	1-JL22042004	Bearing Mount Cylinder
2	1-M6X40GB5781Z	Hex. Bolt M6x45	68	1-M6X10GB80B	Hex. Socket Set Screw M6x10
3	1-JL20061102-081S	Knurled Knob Body	69	1-JL22043001	Lower Guide Body
4	1-M6GB6172Z	Hex. Nut M6	70	1-JL22043002	Lower Guide Shaft
5	1-JL20010010D	Slotted Insert	71	1-JL22043003	Lower Guide Mount
6	1-JL20010014	Special Spring Washer 10	72	1-M6GB889Z	Lock Nut M6
7	1-JL20010011A001S	Lock Housing	73	1-WSH6GB97D1Z	Washer 6
8	1-JL22012000B049W	Upper Door	74	1-WSH6GB96Z	Washer 6
9	1-RVT4X8GB12618A	Rivet 4x8	75	1-M6X20GB5783Z	Hex. Bolt M6x20
10	1-JL22010008	Leaf Spring	76	1-JL22042005	Guide Adjust Screw
11	1-JL20010012	Special Nut M22	77	1-BRG80026GB278	Ball Bearing 6mm
12	1-JL20010009	Tongue Lock	78	1-JL22040004	Guide Key
13	1-WSH6GB93Z	Spring Washer 6	79	1-WSH6GB97D1Z	Washer 6
14	1-M6GB889ZF	Lock Nut M6	80	1-M6GB889ZF	Lock Nut M6
15	1-JL22024001-001S	Blade Tension Knob Cap	81	1-WSH6GB93Z	Spring Washer 6
16	1-JL22024002-001S	Blade Tension Knob Body	82	1-JL20010009	Tongue Lock
17	1-JL22021003	Blade Tensioner	83	1-JL20010012	Special Nut M22
18	1-WSH8GB97D1Z	Washer 8	84	1-JL22013000-049W	Lower Door
19	1-M6GB6177Z	Flange Nut M6	85	1-JL22010008	Leaf Spring
20	1-M8X50GB14Z	Carriage Bolt M8x50	86	1-RVT4X8GB12618A	Rivet 4X8
21	1-JL20010001	Bushing Ring	87	1-JL20010011-001S	Lock Housing
22	1-JL22010001A-001S	Top Plug	88	1-JL20010014	Special Spring Washer 10
23	1-JL22011000-050W	Frame	89	1-JL20010010D	Slotted Insert
24	1-M6X12GB5781B	Hex. Bolt M6x12	90	1-M6GB6172Z	Hex. Nut M6
25	1-JL20061101-001S	Blade Tracking Knob Cap	91	1-JL20061102-081S	Knurled Knob Body
26	1-JL20061102-081S	Blade Tracking Knob Body	92	1-M6X40GB5781Z	Hex. Bolt M6x40
27	1-M6X60GB5781Z	Hex. Bolt M6x60	93	1-JL20061101-081S	Knurled Knob Cap
28	1-M6GB6172Z	Hex. Nut M6	94	1-M8X30GB70B	Hex. Socket Head Cap Screw M8x30
29	1-JL22020002-001S	Wing Nut M6	95	1-WSH8GB93Z	Spring Washer 8
30	1-WSH6GB96Z	Washer 6	96	1-WSH8GB97D1Z	Washer 8
31	1-JL22041009	Slider	97	1-G7412634A	Motor
32	1-M8X20GB14Z	Carriage Bolt M8x20	98	1-M6X20GB5783Z	Hex. Bolt M6x20
33	1-JL20041004	Bolt Guide	99	1-M6GB6170Z	Hex. Nut M6
34	1-JL20010016-001S	Wing Nut M8	100	1-JL22020004	Lower Bearing Bolt
35	1-JL22041001E	Blade Guide	101	1-M14GB6171Z	Hex. Nut M14
36	1-JL20010005A	Sliding guide	102	1-JL22071001	Motor Pulley
37	1-M6X12GB5781B	Hex. Bolt M6x12	103	1-M6X10GB80B	Hex. Socket Set Screw M6x10
38	1-WSH6GB862D2Z	Lock Washer 6	104	1-JL22020003	Poly-V-Belt
39	1-JL22042005	Guide Adjust Screw	105	1-BRG80101GB278	Ball Bearing 12mm
40	1-BRG80026GB278	Ball Bearing 6mm	106	1-CLP28GB893D1B	Retaining Ring 28
41	1-WSH6GB97D1Z	Washer 6	107	1-JL22023001	Lower Wheel
42	1-JL22042004	Bearing Mount Cylinder	108	1-JL22022002	Tire
43	1-M6X10GB80B	Hex. Socket Set Screw M6x10	109	1-CLP12GB894D1B	Retaining Ring 12
44	1-JL22041003	Upper Guide Mount	110	1-JL22020001	Blade
45	1-JL22042002	Upper Guide Shaft	111	1-JL22022001	Upper Wheel
46	1-JL22042003	Bearing Mount Cylinder w/Cap	112	1-JL22021006	Upper Bearing Bolt
47	1-JL22042001	Upper Guide Body	113	1-JL23021001-050W	Wheel Carrier Bracket
48	1-M6X30GB14Z	Carriage Bolt M6x30	114	1-M14GB6171Z	Hex. Nut M14
49	1-JL22030002-001S	Glide Piece	115	1-JL22021004	Star Lock
50	1-JL22032001	Upper Table Trunion	116	1-JL22021002	Mount Shaft
51	1-WSH6GB862D2Z	Lock Washer 6	117	1-JL22021001-050W	Blade Tensioner
52	1-M6X12GB5781Z	Hex. Bolt M6x12	118	1-M8X70GB14Z	Carriage Bolt M8x70
53	1-JL22030001	Lower Table Trunion	119	1-JL20010004	Brush Strip
54	1-M6X16GB14Z	Carriage Bolt M6x16	120	1-M8GB6177Z	Flange Nut M8
55	1-JL22020002-001S	Wing Nut M6	121	1-M6X35GB12Z	Hex. Bolt M6x35
56	1-WSH6GB96Z	Washer 6	122	1-M6GB6170Z	Hex. Nut M6
57	1-M6GB6177Z	Flange Nut M6	123	2-U23182300-472	Cable w/Plug
58	1-1506003	Indicator	124	1-WSH4GB862D2Z	Lock Washer 4
59	1-ST3D5X9D5GB845Z	Tapping Screw ST3.5x9.5	125	1-WSH4GB97D1Z	Washer 4
60	1-JL22031001-001G	Table	126	1-M4X8GB818Z	Pan Head Screw M4x8
61	1-JL22031002-001S	Table Insert	127	1-JL20070002	Switch Cover Plate
62	1-JL60040002	Aluminium Bar	128	1-J-9301B	Lock Switch
63	1-JL60040001-001S	Miter Gauge Base	129	1-M4X10GB823Z	Pan Head Screw M4x10
64	1-JL60040004	Indicator	130	1-JL22021100-050W	Tension Bracket
64	1-M5X6GB818B	Pan Head Screw M5x6	131	1-JL20072003	Rubber Tube
66	1-JL60040003-001S	Knob	132	1-WSH8GB96Z	Washer 8

Parts Explosion





2-Year Limited Warranty

RIKON Power Tools/Richen Enterprise, Inc. (“Seller”) warrants to only the original retail consumer/purchaser of our products that each product be free from defects in materials and workmanship for a period of two (2) years from the date the product was purchased at retail. This warranty may not be transferred.

This warranty does not apply to defects due directly or indirectly to misuse, abuse, negligence, accidents, repairs, alterations, lack of maintenance or normal wear and tear. Under no circumstances will Seller be liable for incidental or consequential damages resulting from defective products. All other warranties, expressed or implied, whether of merchantability, fitness for purpose, or otherwise are expressly disclaimed by Seller. This warranty does not cover products used for commercial, industrial or educational purposes.

This limited warranty does not apply to accessory items such as blades, drill bits, sanding discs or belts and other related items.

Seller shall in no event be liable for death, injuries to persons or property, or for incidental, contingent, special, or consequential damages arising from the use of our products.

To take advantage of this warranty proof of purchase documentation, which includes date of purchase and an explanation of the complaint, must be provided.

The Seller reserves the right to effect at any time, without prior notice, those alterations to parts, fittings, and accessory equipment which they may deem necessary for any reason whatsoever.

To take advantage of this warranty, please fill out the enclosed warranty card and send it to:
RIKON Warranty
400 West Cummings Park
Suite 1000
Woburn, MA 01801

The card must be entirely completed in order for it to be valid. If you have any questions please contact us at 877-884-5167 or warranty@rikontools.com.



For more information:
400 West Cummings Park, Suite 1000
Woburn, MA 01801

877-884-5167/781-933-8400
techsupport@rikontools.com
www.rikontools.com