

16" VS Scroll Saw

Model: 10-600VS

RIKON

POWER TOOLS



Shown With Optional Flex Shaft

Record the serial number and date of purchase
in your manual for future reference.

Serial number: _____

Date of purchase: _____

For more information:

www.rikontools.com or info@rikontools.com

For Parts or Questions:

techsupport@rikontools.com or 877-884-5167






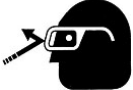


Operator Safety: Required Reading

IMPORTANT! Safety is the single most important consideration in the operation of this equipment. The following instructions must be followed at all times.

There are certain applications for which this tool was designed. We strongly recommend that this tool not be modified and/or used for any other application other than that for which it was designed. If you have any questions about its application, do not use the tool until you have contacted us and we have advised you.

General Safety Warnings

KNOW YOUR POWER TOOL. Read the owner's manual carefully. Learn the tool's applications, work capabilities, and its specific potential hazards.

| | |
|---|---|
|  | ⚠ DANGER ALWAYS GROUND ALL TOOLS. If your tool is equipped with a three-pronged plug, you must plug it into a three-hole electric receptacle. If you use an adapter to accommodate a two-pronged receptacle, you must attach the adapter plug to a known ground. Never remove the third prong of the plug. |
| | ALWAYS AVOID DANGEROUS ENVIRONMENTS. Never use power tools in damp or wet locations. Keep your work area well lighted and clear of clutter. |
|  | ⚠ DANGER ALWAYS REMOVE THE ADJUSTING KEYS AND WRENCHES FROM TOOLS AFTER USE. Form the habit of checking to see that keys and adjusting wrenches are removed from the tool before turning it on. |
| | ALWAYS KEEP YOUR WORK AREA CLEAN. Cluttered areas and benches invite accidents. |
|  | ⚠ DANGER ALWAYS KEEP VISITORS AWAY FROM RUNNING MACHINES. All visitors should be kept a safe distance from the work area. |
| | ALWAYS MAKE THE WORKSHOP CHILDPROOF. Childproof with padlocks, master switches, or by removing starter keys. |
|  | ⚠ DANGER NEVER OPERATE A TOOL WHILE UNDER THE INFLUENCE OF DRUGS, MEDICATION, OR ALCOHOL. |
|  | ⚠ DANGER ALWAYS WEAR PROPER APPAREL. Never wear loose clothing or jewelry that might get caught in moving parts. Rubber-soled footwear is recommended for the best footing. |
|  | ⚠ DANGER ALWAYS USE SAFETY GLASSES AND WEAR HEARING PROTECTION. Also use a face or dust mask if the cutting operation is dusty. |
|  | ⚠ DANGER NEVER OVERREACH. Keep your proper footing and balance at all times. |
|  | ⚠ DANGER NEVER STAND ON TOOLS. Serious injury could occur if the tool is tipped or if the cutting tool is accidentally contacted. |

⚠ DANGER**ALWAYS DISCONNECT TOOLS.**

Disconnect tools before servicing and when changing accessories such as blades, bits, and cutters.

**ALWAYS AVOID ACCIDENTAL STARTING.**

Make sure switch is in "OFF" position before plugging in cord.

NEVER LEAVE TOOLS RUNNING UNATTENDED.**⚠ DANGER****ALWAYS CHECK FOR DAMAGED PARTS.**

Before initial or continual use of the tool, a guard or other part that is damaged should be checked to assure that it will operate properly and perform its intended function. Check for alignment of moving parts, binding of moving parts, breakage of parts, mounting, and any other conditions that may affect its operation. A guard or other damaged parts should immediately be properly repaired or replaced.

Special Safety Rules For Scroll Saws

When using electric tools basic safety precautions should always followed to reduce the risk of fire, electric shock and personal injury. Read all these instructions before attempting to operate this product. Save these instructions for future reference.

- Keep work area clear. Cluttered areas and benches invite injuries.
- Consider work area environment. Do not expose tools to rain. Do not use tools in damp or wet locations. Keep work area well lit. Do not use tools in the presence to flammable liquids or gases.
- Guard against electric shock. Avoid body contact with grounded surfaces.
- Keep other people away. Do not let others, especially children, not involved in the work touch or the power cord and keep them away from the work area.
- Store idle tools. When not use, tools should be stored in a dry locked-up place, out of reach of children.
- Do not force the tool. It will do the job better and safer at the rate for which it was intended.
- Use the right tool. Do not force small tools to do the job of a heavy-duty tool. Do not use tools for purposes not intended; for example do not use circular saws to cut tree limbs or logs.
- Dress properly. Do not wear loose clothing or jewelry that can be caught in moving parts. On-skid footwear is recommended when working outdoors. Wear protective hair covering to contain long hair.
- Use protective equipment. Use safety glasses. Use face or dust mask if cutting operations create dust.
- Connect dust extraction equipment. If devices are provided for the connection of dust extraction and collecting equipment, ensure these are connected and properly used.
- Do not abuse the power cord. Never pull the power cord to disconnect it from the socket. Keep the lead away from heat, oil and sharp edge.
- Secure work. Where possible use clamps or a vice to hold the work. It's safer than using your hand.
- Don't over reach. Keep proper footing and balance at all time.
- Maintain tools with care. Keep cutting tools sharp and clean for better and safer performance. Follow instructions for lubricating and changing accessories. Inspect power cables periodically and if damaged have they replaced by an authorized service facility. Inspect extension cables periodically and replace if damaged. Keep handles dry-clean and free from oil and grease.
- Disconnect tools. When not in use, before servicing and when changing accessories such as blades, bits, cutters, Disconnect tools from the power supply.
- Remove adjusting keys and wrenches. Form the habit of checking to see that keys and adjusting wrenches are removed from the tool before turning it on.
- Avoid unintentional starting. Ensure switch is in 'off' position when plugging in.
- Use outdoor extension leads. When the tool is used outdoors, use only extension leads intended for outdoor use and so marked.
- Stay alert. Watch what you are doing, use common sense and do not operate the tool when you are tired.
- Check damaged parts. Before further use of the tools, it should be carefully checked to determine that it will operate properly and perform its intended function. Check the alignment of moving parts, binding of moving parts, breakage of parts, mounting and any other conditions that may affect its operation. A guard or other part that is damaged should be properly repaired or replaced by an authorized service center unless otherwise indicated in this instruction manual. Do not use the tool if the switch does not turn on and off.
- Warning. Repaired by a qualified person. This electric tool compliers with the relevant safety rules. Repairs should only be carried out by a qualified person using original spare parts; otherwise this may result in considerable danger to the user.

**SAVE THESE INSTRUCTIONS.
Refer to them often.**

Table of Contents

| | |
|---------------------------|-----|
| Safety Warnings..... | 2-3 |
| Sander Safety Rules | 3 |
| Specifications | 4 |
| Contents of Package | 5 |
| Parts List | 6 |
| Parts Explosion..... | 7 |
| Notes | 8 |

Specifications

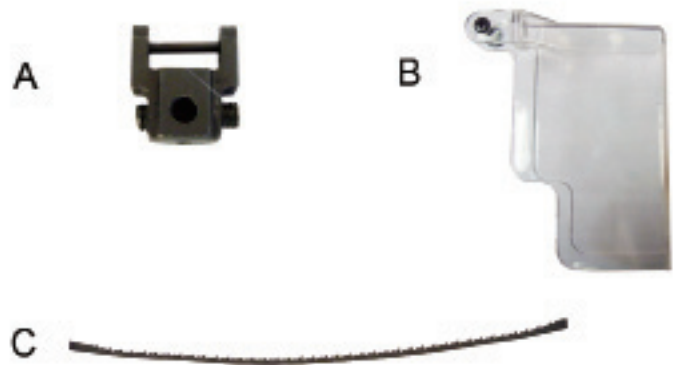
| | |
|---|--------------------------------------|
| Dimensions LxWxHmm (in) | 630x320x380(24-3/4x12-9/16x14-15/16) |
| Table size mm (in) | Ø225x415(10-1/16x16-5/16) |
| Saw blade length mm (in) | 127 (5") |
| Cutting height maxim (in) | 50 (2") |
| Throat depth mm (in) | 400 (15-3/4") |
| Stroke mm (in) | 15 (19/32") |
| Stroke speed per minute (variable) | 550-1650 |
| Table tilting (left) | 0-45 |
| Weight Net kg (lbs) | 14.5 (32 lbs) |
| Dust port diameter mm (in) | 35 (1-3/8") |
| Sound level at max. speed during idle running | 76 dB (A) |

Contents of Package

When unpacking, check to make sure the following parts are included. If any parts are missing or broken, please call RIKON Power Tools at the number on the cover of this manual as soon as possible.

Carton Contents

| Item | Description | Qty |
|------|----------------------|-----|
| A | Pinless blade holder | 2 |
| B | Safety shield | 1 |
| C | Pinless blade | 1 |



List of loose parts in bag

| Description | Qty |
|---|-----|
|  Hex nut M5 | 2 |
|  Washer 5 mm | 1 |
|  Lock washer 5mm | 1 |
|  Screw M5X25 | 1 |
|  L wrench | 1 |



Hex nut M5

2



Washer 5 mm

1



Lock washer 5mm

1



Screw M5X25

1



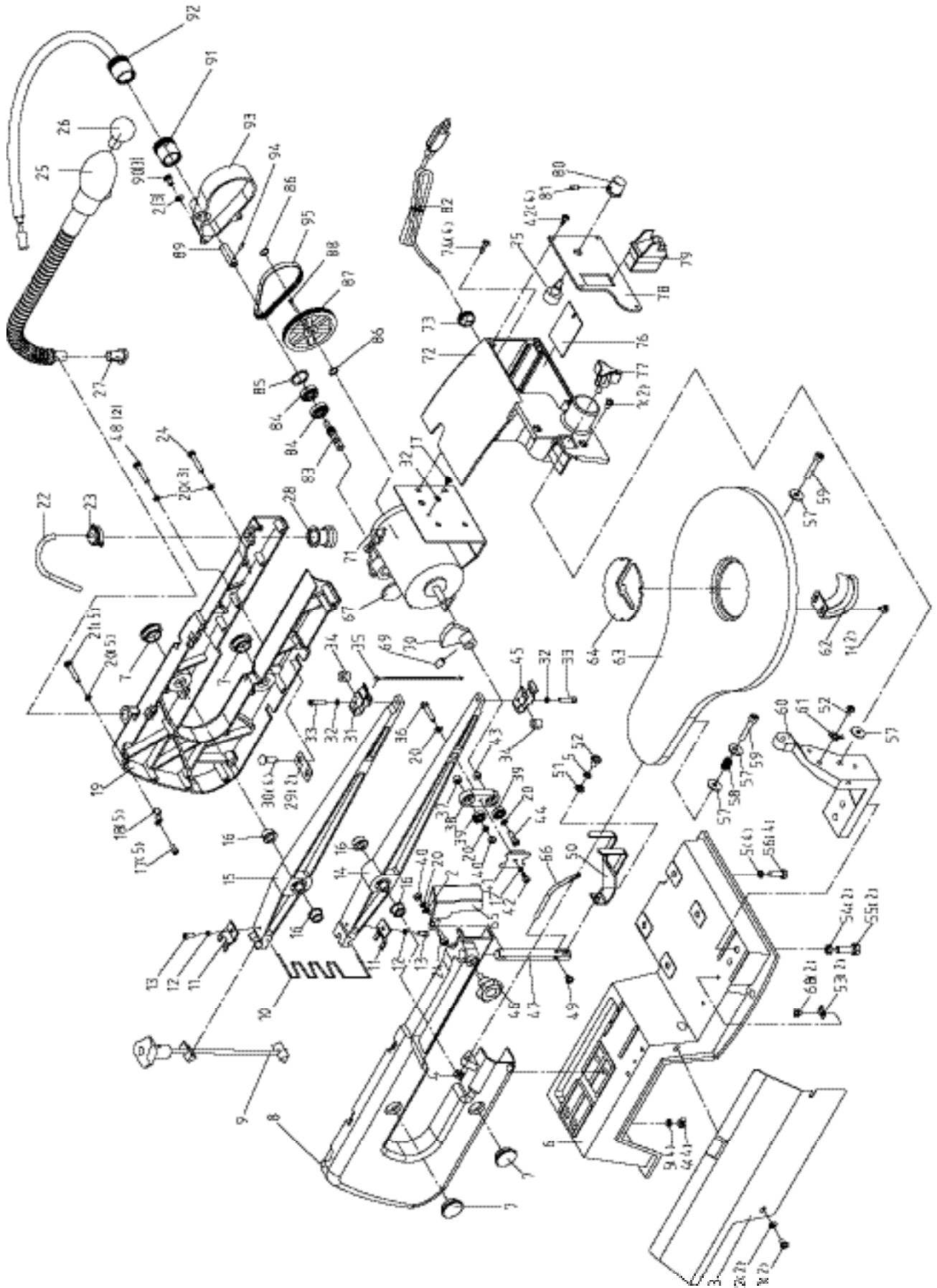
L wrench

1

Parts List

| Key number | Description | | QTY | Key number | Description | | QTY |
|------------|-----------------------------|-----------|-----|------------|------------------------|-------|-----|
| 1 | Philips Screw | M5X8 | 6 | 49 | Philips Screw | M5X6 | 1 |
| 2 | Flat Washer | D5 | 6 | 50 | Drop Foot | | 1 |
| 3 | Side Cover | | 1 | 51 | Flat Washer | D6 | 1 |
| 4 | Hex Nut,Type I | M6 | 5 | 52 | Philips Screw | M6X10 | 2 |
| 5 | Lock Washer | D6 | 9 | 53 | Cord Fix Plate | | 2 |
| 6 | Base | | 1 | 54 | Lock Washer | D8 | 2 |
| 7 | Oil Cap | | 4 | 55 | Hex Socket Screw | M8X25 | 2 |
| 8 | Left Arm Housing | | 1 | 56 | Hex Bolt | M6X20 | 4 |
| 9 | Tension Bolt Assy | | 1 | 57 | Big Flat Washer | D6 | 4 |
| 10 | Spring | | 1 | 58 | Press Spring | | 1 |
| 11 | Pressure Plate | | 2 | 59 | Hex Socket Screw | M6X35 | 2 |
| 12 | Lock Washer | D4 | 3 | 60 | Work Table Support | | 1 |
| 13 | Hex Socket Screw | M4X10 | 2 | 61 | Scale Indicator | | 1 |
| 14 | Lower Arm | | 1 | 62 | Bevel Scale | | 1 |
| 15 | Upper Arm | | 1 | 63 | Work Table | | 1 |
| 16 | Arm Bearing | | 4 | 64 | Throat plate | | 1 |
| 17 | Philips Screw | M4X6 | 7 | 65 | saw blade cover | | 1 |
| 18 | Cord clip | | 5 | 66 | Pipe | | 1 |
| 19 | Right Arm Housing | | 1 | 67 | Dust Proof Cap | | 1 |
| 20 | Lock Washer | D5 | 11 | 68 | Philips Screw | M4X8 | 2 |
| 21 | Philips Screw | M5X35 | 5 | 69 | Hex Socket Screw | M8X12 | 1 |
| 22 | Plastic Tubing | | 1 | 70 | Eccentricity Pulley | | 1 |
| 23 | Bellows Cap | | 1 | 71 | DC Motor | 90W | 1 |
| 24 | Philips Screw | M5X28 | 2 | 72 | Switch Box | | 1 |
| 25 | Lamp Assy | | 1 | 73 | strain release | | 1 |
| 26 | Bulb | 12V/10W | 1 | 74 | Philips Screw | M4X10 | 4 |
| 27 | Lamp Fasten Nut | | 1 | 75 | Variable Speed switch | | 1 |
| 28 | Bellow | | 1 | 76 | Circuit Board | 120V | 1 |
| 29 | Fixing Plate | | 2 | 77 | Table Lock Knob | | 1 |
| 30 | Carriage Bolt | M6X20 | 4 | 78 | Switch Fixing Board | | 1 |
| 31 | Upper Blade Support | | 1 | 79 | self-lock switch | | 1 |
| 32 | Star Washer | D4 | 2 | 80 | variable Speed knob | | 1 |
| 33 | Hex Socket Screw | M4X20 | 2 | 81 | Hex Socket Screw | M5X6 | 1 |
| 34 | Bushing | | 2 | 82 | Power Cord | | 1 |
| 35 | Saw Blade | | 1 | 83 | Gear shaft | | 1 |
| 36 | Hex Socket Screw | M5X25 | 1 | 84 | Bearing | | 2 |
| 37 | Big Cushion | | 1 | 85 | spring washer | D22 | 1 |
| 38 | Eccentricity Connector Assy | | 1 | 86 | spring washer | D8 | 4 |
| 39 | Ball bearing | | 2 | 87 | Big wheel | | 1 |
| 40 | Hex Nut,Type I | M5 | 2 | 88 | Key | 3x8 | 1 |
| 41 | Bracket | | 1 | 89 | Shaft Connector Sleeve | | 1 |
| 42 | Philips Screw | ST4.2X9.5 | 5 | 90 | Philips Screw | M5x12 | 3 |
| 43 | Small Cushion | | 1 | 91 | Safety Screw Cap | | 1 |
| 44 | Hex Socket Screw | M5X16 | 1 | 92 | Flexible Shaft | | 1 |
| 45 | Lower Blade Support | | 1 | 93 | Belt Cover | | 1 |
| 46 | Drop Foot Lock Knob | | 1 | 94 | Pin | | 1 |
| 47 | Drop Foot Fixing Pole | | 1 | 95 | Belt | | 1 |
| 48 | Philips Screw | M5X30 | 2 | | | | |

Parts Explosion





For more information:
16 Progress Road
Billerica, MA 01821

877-884-5167 / 978-528-5380
techsupport@rikontools.com
www.rikontools.com

