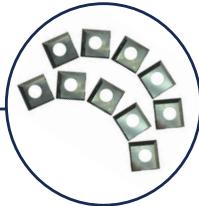


RIKON

8" Benchtop Jointer with Helical - Style Cutterhead Model 20-800H

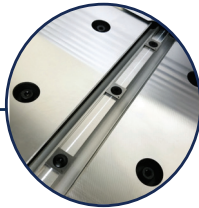
Indexible Inserts

16 - 2 sided indexible carbide inserts



Helical-Style Cutterhead

Has 6 rows with indexible carbide inserts



Large Fence

Large 19-3/4" x 4-3/8" fence adjusts 90° to 135°

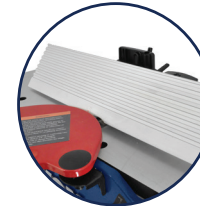


Table Extensions

Expands table from 30-1/2" to 51-1/2"



MOTOR

Amps	10
Volts	120V, 60 Hz
Motor Speed (No Load)	20,000 RPM

FENCE

Size	19-3/4" x 4-3/8"
Tilt	90° - 135°

CUTTERHEAD

Diameter	2"
Speed	12,000 RPM
Number of Carbide Inserts (2 sided)	16
Carbide Insert Size	14.2mm x 14.2mm x 2mm
Number of Insert Rows	6
Maximum Depth of Cut	1/8"
Maximum Cutting Width	8"
Minimum Length of Stock	10"
Minimum Width of Stock	3/4"
Minimum Thickness of Stock	1/2"
Overall Table Size (LxW)	30-1/2" x 8-3/16"
Overall Table Size w/Extensions (LxW)	51-1/2" x 8-3/16"
Dust Port (OD) Diameter	4" & 2-1/2"
Dust Collection Minimum CFM	100

OVERALL DIMENSIONS

Height	13"
Width	18-3/4"
Length	51-1/2"
Base Size	19" x 11-1/4"
Net Weight	49 lbs.
Shipping Weight	61 lbs.
Shipping Carton (LxWxH)	36.25" x 15.5" x 11.5"

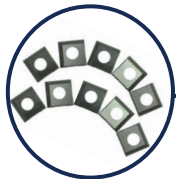
Call today for more information **877-884-5167**
or visit **www.rikontools.com** for a dealer near you!



RIKON

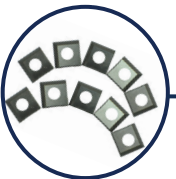
8" Benchtop Jointer with Helical - Style Cutterhead Model 20-800H

Accessories



25-499

Replacement 2 Sided
High Speed Steel (HSS) Inserts
(10 Pack)



25-499C

Replacement 2 Sided
Carbide Inserts
(10 Pack)



25-410

Optional Planer Stand
Plywood/Wood Top Required for
Mounting Machine to Stand



25-593

T25 Mounting Screws
for Inserts (10 Pack)



Shown with Optional Stand
(Plywood top not included)
25-410

Call today for more information **877-884-5167**
or visit **www.rikontools.com** for a dealer near you!

